



MUNA Open Space Projects

Fallen Bridge Park Activity Court
San Bruno-17th-Vermont Project

From Right-of Way to Open Space

Fallen Bridge Park History

1968: Truck driver steps on control to raise truck back instead of brake – the destroyed 18th-Street pedestrian bridge gets rebuilt.

1970: Potrero Beautification Group gets City to take Encroachment Permit and create a mini-park with a slide and bouncy animals in the sand circle. SF RPD is charged with maintaining the park. Neighbors celebrate.

1980: The sound wall is built between Utah Street and the 101 highway.



2

Fallen Bridge Park Recent History

2003: Crime near the bridge results in the creation of the Utah-Mariposa SAFE group, MUNA. The Fallen Bridge Mini-Park is identified as a contributor to crime due to its trashy appearance and lack of community use.

2004: MUNA goes to Caltrans in Oakland to find Encroachment Permit History. SF RPD had no record of permit.



3

Fallen Bridge Park Reclaimed!



Where's Ernie?

In 2004 the MUNA Park Committee worked with Robert Walker (RPD and NPC) to clean up the mini-park, remove graffiti, and re-landscape for safety and beauty.



4

First Park Improvement Plan



After the first clean-up and re-planting, MUNA created a vision for the park, re-designed and useable.

5

Fallen Bridge Park South End Re-Done

In 2007 the Miller Company created a landscape plan pro bono. MUNA secured a \$46K Community Challenge grant and SF Beautiful Grant in 2008 and implemented the design for the south end of the park. This was only part of the landscape plan. With help from RPD and volunteer labor from neighbors, an ugly chain link fence was replaced with a beautiful stone wall and benches and a dirt hill was planted with native and drought-tolerant plants.



6

Fallen Bridge Park Work Parties

Part of Community Challenge Grant agreement was MUNA taking charge of the on-going maintenance of the park. Work parties draw neighbors together for a few hours of weeding and planting every 2 months or so.



7

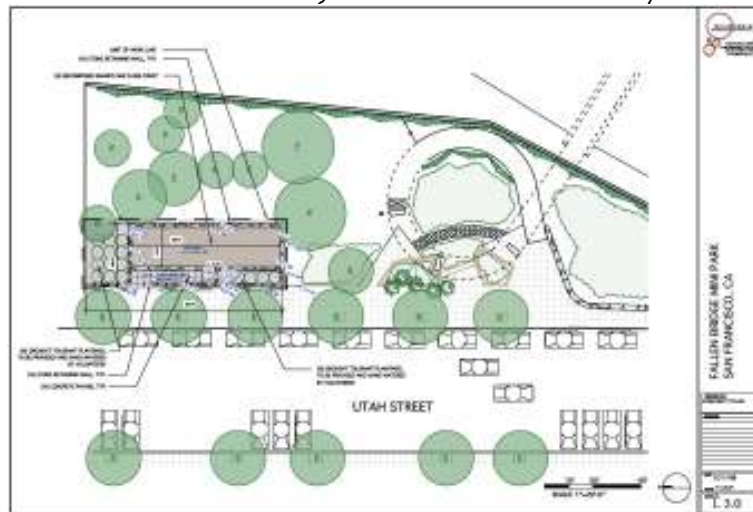
Joint Park Work Parties

In 2011 MUNA started working with the San Bruno NE Group to hold joint work parties, cleaning and maintaining the 18th Street pedestrian bridge and the mini-parks on either side.



8

Fallen Bridge Park Next Step



Multi-Use Activity Court part of the landscape design

9

Activity Court Budget

MUNA Mini-Park Activity Court Budget
4-Feb-12

EXPENSE	Amount	Unit	Cost/Unit	Expense	INCOME		
Site Preparation					Eastern Neighborhoods Benefit Fund	\$ 10,000.00	Pending
Demolish (E) Wood Wall	100	LF	\$	\$ 900.00	Brashear Landscape Company	\$ 8,000.00	Pending
Remove (E) Wood Bench	1	each	\$300	\$ 300.00	MUNA	\$ 5,000.00	Pending
Remove (E) Shrubs	allow		\$600	\$ 600.00	S.F. Community Challenge Program	\$ 25,000.00	Prospective
Layout	allow		\$1,200	\$ 1,200.00	W. Beautiful Foundation	\$ 5,000.00	Prospective
Grading	2500	SF	\$3.5	\$ 8,750.00	Donated Labor from Neighborhood	\$ 2,000.00	Pending
					Bethel Foundation	\$ 10,000.00	Pending
					Wally Katgs	\$ 10,000.00	Pending
					TOTAL Income	\$ 125,000.00	
Masonry							
Natural Stone Wall	650	LF	\$75	\$ 48,750.00			
Paving							
Concrete Flatwork	186	SF	\$12.5	\$ 2,325.00			
Decomposed Granite	1000	SF	\$8	\$ 8,000.00			
Irrigation							
Irrigation	1	allow	\$6000	\$ 6,000.00			
Subtotal				\$ 76,625.00			
Contractor's profit & overhead 25%				\$ 19,156.25			
ESTIMATED BID				\$ 95,781.25			
Project Contingency				\$ 8,803.13			
TOTAL Expense				\$ 104,584.38			

10

Interview with Ernie



11

Why an Activity Court?

- Shift park from a sloped green space to look at to a useable park.
- Provide an area to play for children and adults.
- Useable for bocce, pétanque, catch, t'ai chi, pilates, etc.
- Continue the beautification begun with the stone wall and drought resistant plants.
- Increase safety (court design maximizes visibility).
- Grassy tree area can be maintained while adding court.

12

What's been done so far?

- Neighborhood Planning with Rec & Park and SF Parks Alliance.
- Caltrans Landscape Engineers approval of the concept.
- Mayors office of MOD approval of concept.
- Community White Elephant Sale.
- Grant applications submitted (Wells Fargo, Bothin Foundation).
- Planning to apply to Community Challenge Grant program.

13

San Bruno-17th-Vermont Project



14

Problems

- The area along San Bruno and Vermont, under freeway and on 17th is used for homeless encampments and as a pathway to Caltrans property behind houses.
- Caltrans and the California Highway Patrol clear out homeless and their belongings every couple of months, but in a few days they return.
- The sidewalk along San Bruno is always full of broken glass, garbage, condoms and syringes making it difficult for pedestrians to pass. The area alongside and behind the cyclone fence is used for prostitution.
- 17th Street with its bike path and pedestrian sidewalks is an important pedestrian corridor between the Mission and Potrero Hill.
- The 17th street section east and west of 101 is not safe, clean or well lighted, in contrast with the rest of 17th street.

15

Actions so far

- Formed a committee to agree on problems and work on solutions.
- Met with Supervisor Cohen to ask for support.
- Met with Sandra Zuniga (DPW) and Julia Brashares (SF Parks Alliance) to set us up as part of the Street Parks program.
- Met with Carlos Aguilar (Caltrans), Larry Stringer (DPW), Sandra Zuniga, Julia Brashares to see if DPW and Caltrans were willing to work with us.

16

Actions so far continued

- Met with Pastor of Russian Gospel Church and got support for concept and for traffic calming petition
- Contacted Professor Walter Hood, UCB, to request that his urban landscaping class use the San Bruno -17th-Vermont area as a project
- Engaged some neighbors from 400 block of Vermont to join in the project.
- Sent Professor Hood a list of problems and solutions from the neighbors.
- Documented actions on sfmuna website. (sfmuna.org)

17

Possible Solutions

From Sarah Moos "Unaccepted and Paper Streets".....

BENEATH FREEWAY streets occurring beneath freeway ramps and roadways in the form of vacant lots, easements, and embankments



18

Possible Solutions continued

- Move back and strengthen freeway fence.
- Re-landscape areas for maintenance, visibility and beauty.
- Create community garden.
- Create dog exercise area.
- Create rest/lunch break area on corner.
- Develop maintenance plan involving neighborhood, church, businesses (UPS etc).

19

Next Steps

- Neighbors will meet with Professor Hoods class to review solutions.
- Neighbors will select a solution that the majority want.
- Solution will be rendered by Landscape Architect.
- Solution will be reviewed and accepted by neighbors, Caltrans and the City agencies.
- Search for funding. Community Challenge Grant, Eastern Neighborhood Benefit Fund, Private Foundations, Matching Donations from community and companies they work for.

20

How Can you help?

- Boosters can write a letter of support for the projects.
- Individuals can volunteer for park work-days
- Individuals can contribute to the SF Parks Alliance fund for each park once primary funding is in place.
- Check our website: sfmuna.org

21