

- TREES
- Pistacia chinensis* Chinese Pistache
 - Prunus serrulata* 'Kwanzan' Flowering Cherry
 - Pinus canariensis* Canary Island Pine

Symbol	Botanical Name	Common Name
SHRUBS/ GROUNDCOVERS		
	<i>Acanthus mollis</i>	Bear's Breech
	<i>Heuchera maxima</i>	Island Alum Root
	<i>Lantana camara</i> 'Dwarf Yellow'	Dwarf Yellow Lantana
	<i>Limonium perzli</i>	Sea Lavender
	<i>Liriope muscari</i>	Big Blue Lilly Turf
	<i>Muhlenbergia regens</i>	Deer Grass
	<i>Myrtus c.</i> 'Compacta Variegata'	Dwarf Variegated Myrtle
	<i>Rhamnus californica</i> 'Eve Case'	Dwarf Coffeeberry
	<i>Phormium</i> 'Maori Maiden'	Hybrid New Zealand Flax
	<i>Pittosporum t.</i> 'Variegata'	Variegated Tobira
	<i>Sedum</i> 'Tricolor'	Sedum

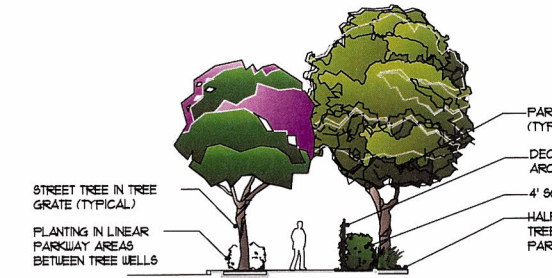
NOTES:

PLANT MATERIAL NOT LISTED MAY BE USED, SUBJECT TO APPROVAL BY THE CITY.

ALL LANDSCAPE PLANS AND INSTALLATIONS SHALL ADHERE TO CITY DESIGN GUIDELINES, CODES AND REGULATIONS.

ALL LANDSCAPE AREAS SHALL RECEIVE AN AUTOMATIC IRRIGATION SYSTEM.

ALL LANDSCAPE INSTALLATIONS SHALL BE PERMANENTLY MAINTAINED.



SECTION 'A'
PERIMETER SCREENING - TYPICAL
 SCALE: 1"=10'-0"