

Potrero Gateway Park

17th, San Bruno, Mariposa
and Vermont Streets
Revitalization Project

Agenda

- Who are we and why are we having this meeting?
- What is Potrero Gateway Park and who are we working with?
- What have we done so far?
- Potrero Gateway Park - Vision
- Design Process and Fundraising
- Get Involved. What's important to you?

Who are we and why are we having this meeting?

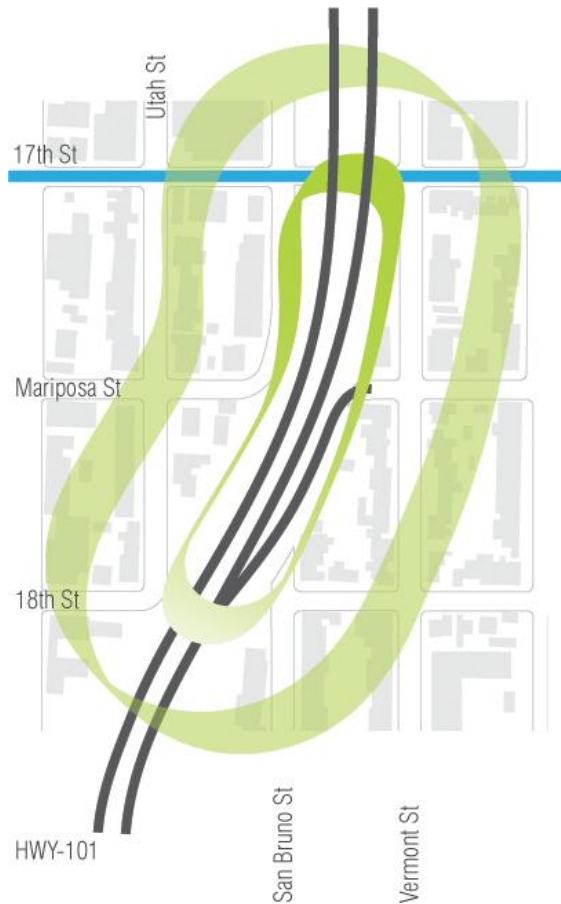
- Your neighbors from Vermont Street, San Bruno Avenue, Mariposa and Utah Streets
- MUNA Neighborhood Association
- We want your input and help in order to make the neighborhood better
- We want to revitalize the 101 right-of-way open space.

Who are we and why are we having this meeting?

- SF MUNA, <http://sfmuna.org>
 - Neighborhood association representing residents living on the 400-500 block of Utah, San Bruno and Vermont, bordered by 17th, 18th and Mariposa Streets
- Track Record:
 - Fallen Bridge Mini Park at Utah and 18th
 - Bridge graffiti removal
 - NERT
 - Park Clean-up Parties
 - Working with Caltrans
 - Working with RPD



What is Potrero Gateway Park and who are we working with?



- Greenway around the 101
- Freeway right-of-way along San Bruno, 17th and Vermont north of Mariposa
- DPW, Caltrans, SF Parks Alliance, Supervisor Cohen
- DPW Street Parks program

What have we done so far?

- How the idea originated
 - Group of like-minded local residents with similar concerns and interests
- Why we need this
 - Safety, homeless, cleanliness, bicycle/pedestrian circulation
 - Lets make the area under the freeway an art project!



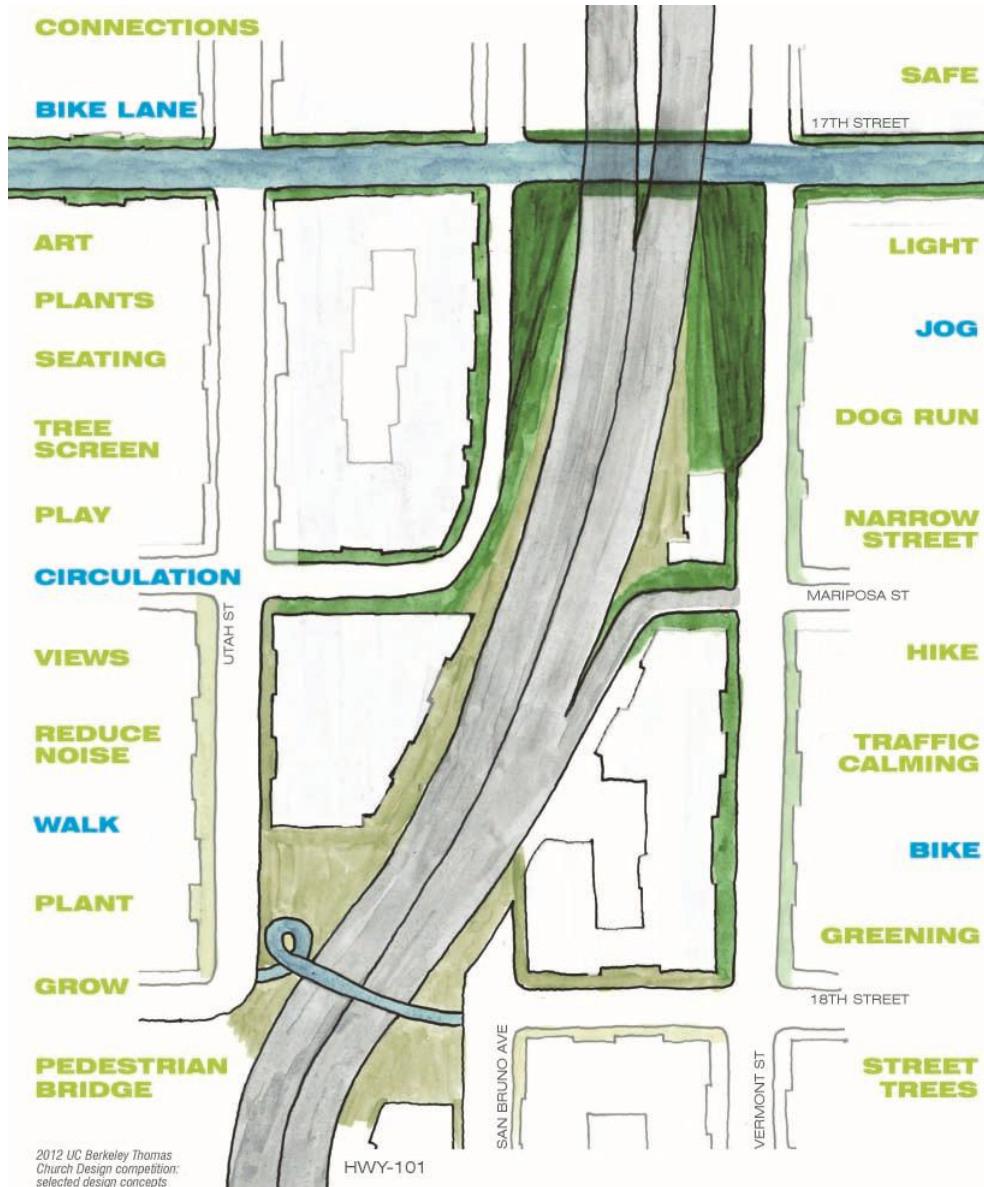
What have we done so far?

- What we learned in the early stages
 - Need buy-in from the broader community, Caltrans, DPW, SF Parks Alliance and the city
 - Can't do anything without a "Landscape Plan"
- What is a "Landscape Plan"
 - How do you get one?
 - How is it implemented?

What have we done so far?

- Met with Supervisor Cohen to ask for support
- Met with DPW & SF Parks Alliance to be come part of the Street Parks Program
- Met with Caltrans & DPW & SF Parks Alliance to get support
- UCB Landscape School Contest targeted our area
- Presented to Potrero Hill Boosters
- Interviewed Landscape Architects and selected Bionic
- Bionic created 8 pager for us
- Raised \$10,000 towards a community design process
- Continue to reach out to local businesses for support.

Potrero Gateway Park - Vision



2012 UC Berkeley Thomas Church Design competition: selected design concepts



Examples We Want to Share With You



Benches Park



Vermont Enclave

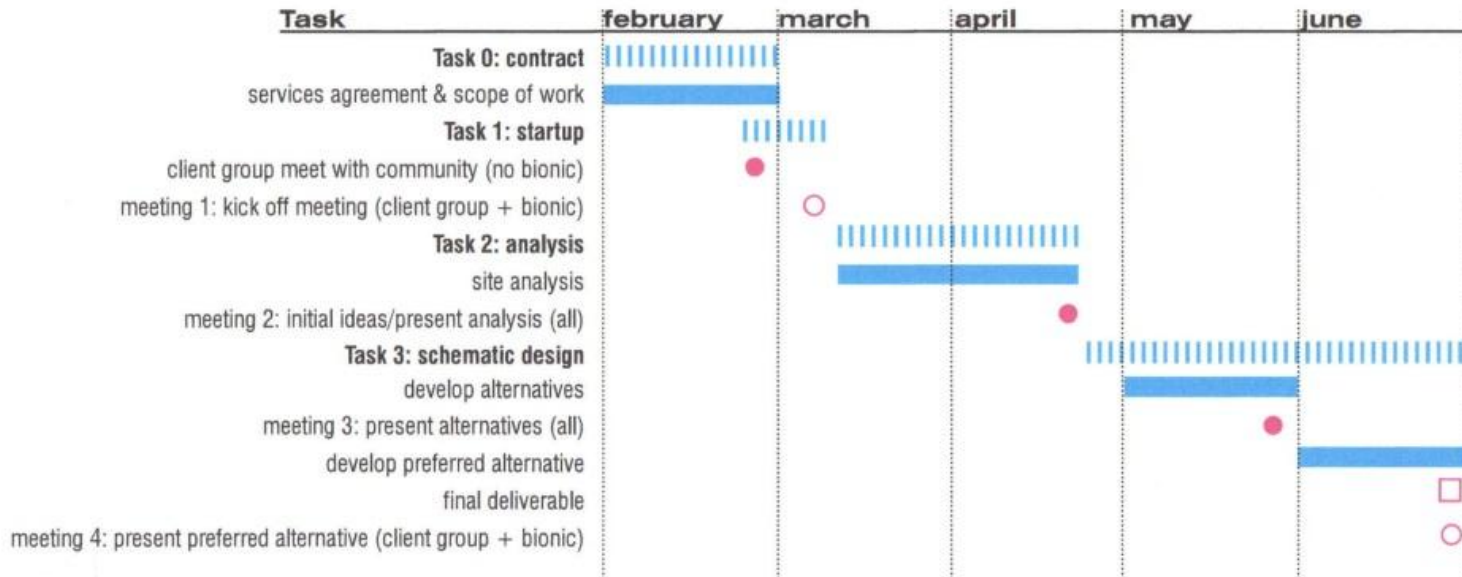


Pennsylvania Garden



Progress Park

Potrero Gateway Design Process



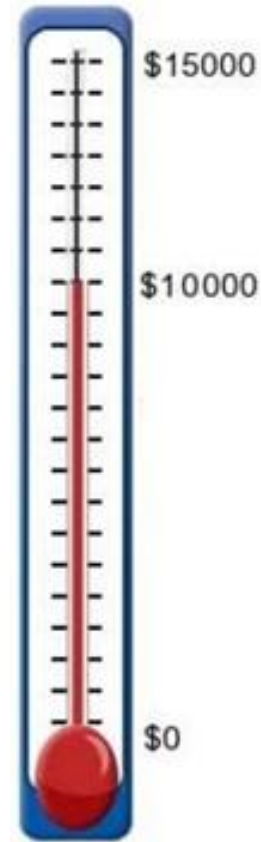
Notes

- = community meeting
- = client/team meeting
- = deliverable
- ||| = approximate

Potrero Gateway Fundraising

- Help us fundraise
 - <http://sfmuna.org/gateway>
- Help with List of Funders
- Phase I - The Design Process
 - Neighbors and local businesses
- Phase II - Making the Design a Reality
 - State, city and federal grants
 - Foundation Grants

Help us reach our fundraising goal!



Potrero Gateway Park - Get Involved

- Community Involvement
 - Design
 - Construction
 - Maintenance
- Possible Maintenance Solutions
 - UPS and other businesses workdays with community
 - Potrero-Dogpatch Green Benefit District

Potrero Gateway Park - Get Involved

- Donate <http://sfmuna.org/gateway>
- Help us fundraise
- Join the SF MUNA email list for progress updates: contact@sfmuna.org
- Join the steering committee
- Give us your ideas!!