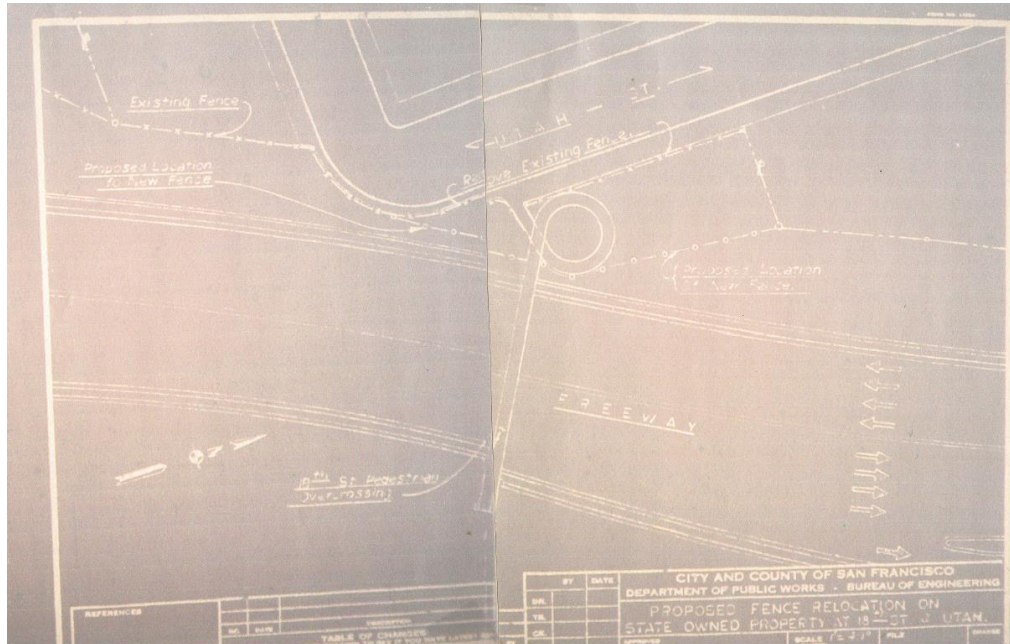


# A Community Project on Caltrans Right-of-Way

A Little history and a look at GBD working with RPD

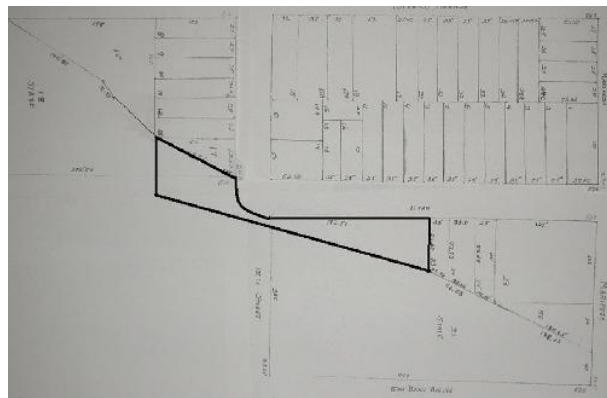
# Fallen Bridge Community Park



# In the Beginning.....



In 1969 a truck, accidentally raising its back section, caused the 18<sup>th</sup> & Utah pedestrian Bridge to fall



In 1970, the City took an encroachment permit to transform the right-of-way that had been carved out by CA 101 in 1954.

With the help of Supervisor Gonzales, and the advent of a new pedestrian overpass, Fallen Bridge Park was formed

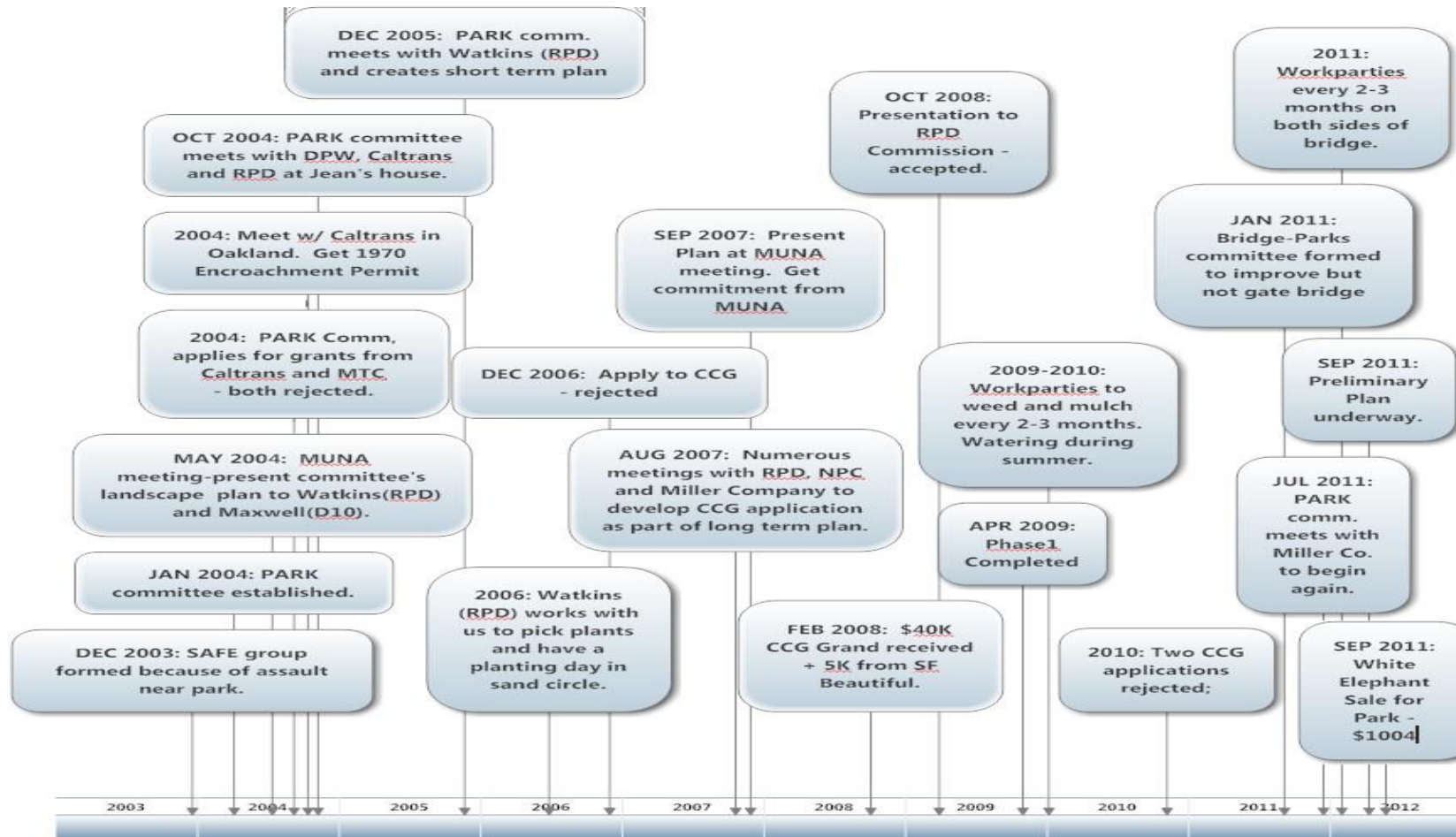
# In 2004, after a knife incident on the bridge...

The original play structures had been removed, the circular sandpit contained broken glass trash. Disrepair invited loud music, drinking, prostitution and crime.

Neighbors met with Sophie Maxwell (BOS) and Robert Watkins (RPD) to present a plan.



# Timeline of neighborhood work from 2003-2012

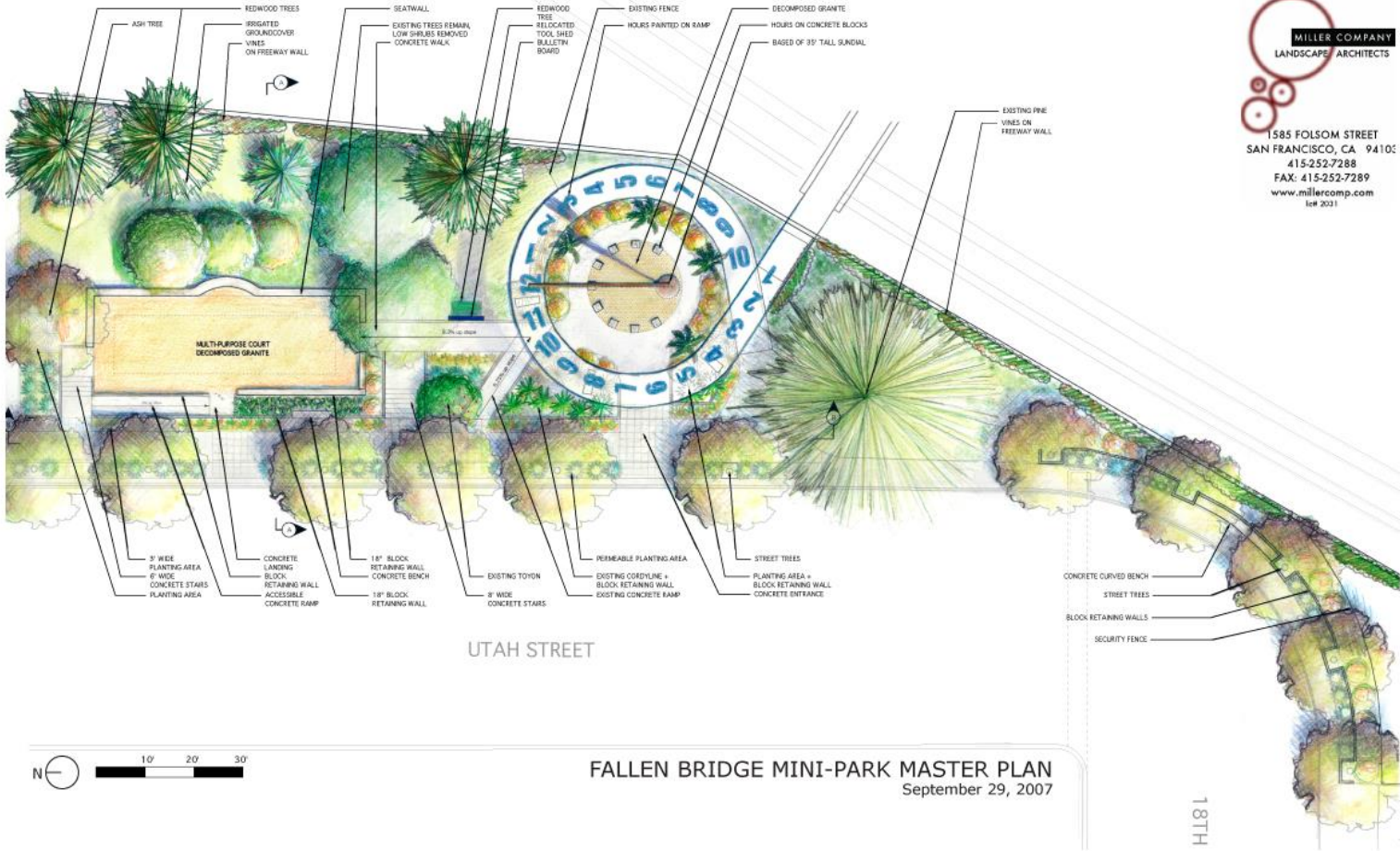


## With the help of Robert Watkins, a short term plan in 2004



- The concrete walls were painted
- The circular area had a path and was planted
- A community green garden box was filled with hoses so the neighbors could water
- Neighbors shared the locks with RPD

# Professional Landscape Design on 2007



**MILLER COMPANY**  
LANDSCAPE ARCHITECTS

1585 FOLSOM STREET  
SAN FRANCISCO, CA 94108  
415-252-7288  
FAX: 415-252-7289  
www.millercomp.com  
IC# 2011

Miller Company drawing

# Four CCG Grants Later....



2013 - Community Park Sign



2009- Planting the South Side



2014- Celebrate Downtown HS Art in park



2014- Planting around new Petanque Court

# The Green Benefit District -2015

The GBD was approved by a neighborhood vote and by the SF Board of Supervisors in 2015.

The Management Plan, voted on by the neighbors, promises to do maintenance and capital projects at Fallen Bridge Park.

Neighbors expect the GBD to supplement the work that the City (RPD and PW) performs.

Neighbors continue to use the parks for Egg hunts, Block Parties, Petanque games, dog walking and just enjoying the well maintained area.

## Current Green Spaces

Green Spaces in the GBD that are currently targeted for maintenance services are identified in Table 5. These Green Spaces will receive maintenance services outlined in this service plan at the commencement of the Dogpatch & NWPB GBD. The GBD Board may add new Green Spaces to the GBD's maintenance and operations service coverage if they satisfy the *Guidelines For Capital Improvements Funding And Admission Of New Green Spaces* set forth on Appendix B of this Management Plan.

TABLE 5 – Current Green Spaces

Zone #1	Zone #2
Progress Park	Fallen Bridge Mini-Park
Minnesota Grove	Benches Garden & Park
Woods Yard Park	Potrero Gateway Park (aka The Loop)
I.M. Scott School	
Esprit Park	
22nd Street Greening	
23rd Street Greening	
25th Street Greening	

Table 6 - SF Rec and Park Baseline Services:

	CUSTODIAL	HORTICULTURAL	MAINTENANCE YARD*
	Weekly	Weekly	Yearly
Esprit Park	7 hours	21 hours	\$5,900
Utah/18 <sup>th</sup> Park	2 hours	2 hours	\$2,225

\* "Maintenance Yard" includes the as needed work of plumbers, electricians, painters, etc. and is quantified by annual investment, not hours worked



# GBD Work at Fallen Bridge since 2015



- Installed Irrigation on the south side
- Installed irrigation on the north side
- Installed a backflow on the north side
- Installed steps on the north side
- Weeds, prunes and replants when necessary on the south side
- Maintains the vine on the chainlink circling the sidewalk
- Removes graffiti on the bridge, posts and pylon if City does not do it in 3 days

# What's the Story?

From 1970 - 2003 Fallen Bridge Park City maintenance could be called neglect.

Crime motivated the neighbors to improve the park in order to protect themselves.

Working with RPD and the Community Challenge Grant Program, the park was improved.

Neighbors were engaged in changing by planting and building.

Neighbors wanted the park maintained and did not want to provide weekly maintenance by themselves. Work parties every 3 months was the max.

RPD did not have resources to maintain the south side and the bridge area.

Neighbors voted for a Green Benefit District for these Caltrans areas.

# What has happened since GBD?

- RPD Landscape crew maintains the north side.
- RPD does not use the Green Box, since preference is to keep tools in truck and avoid theft from box.
- MUNA Park Committee told that RPD will not put capital into the park since it is Caltrans property, not City property.
- GBD makes capital improvements
- GBD landscape crew maintains south side.
- GBD continues neighborhood practice of storing paint in the green box

## 2019 - Without talking to the MUNA park committee

- RPD removes Fallen Bridge community park sign which has been there for 5 years.
- RPD removes GBD sign which has been there for 3 years
- RPD cuts locks off Green Box which has been shared for 15 years.

# How to solve maintenance?

GBD , RPD and MUNA Park Committee need to agree on a division of labor

Task	Who Performs it?	Comments
Weekly northside maintenance (prune, weed, water)	RPD	Neighbors have complained about weeds - north side
Weekly circle maintenance (prune, weed, water)	RPD	
Weekly southside maintenance + chainlink vines (prune, weed, water)	GBD	
Check and control the irrigation	RPD	
Graffiti removal	RPD	
Remove trash	RPD/GBD	
Tree maintenance	RPD	Need to specify level